

## Calibration of a **STARTRAC** E Series Touchscreen

**Difficulty: Easy**



No Tools Required

The following procedure will guide you through the Touchscreen calibration of the E Series E-TRe and E-TRxe treadmills.



**DO NOT TOUCH THE SCREEN UNTIL DIRECTED. DO NOT TOUCH THE SCREEN WITH ANYTHING OTHER THAN YOUR FINGER TIP. USE ONLY ONE FINGER TIP DO NOT HIT THE SCREEN... USE A GENTLE TOUCH**

### STEP 1

- Start on the default screen (Figure 1).

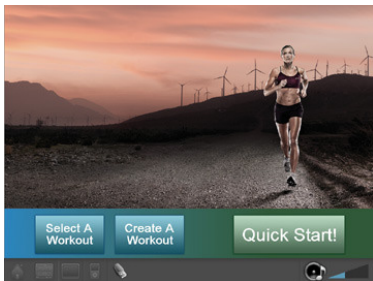


Figure 1

### STEP 2

- Press and hold the VOL '+' key and the CH '+' key and the number '3' key on the keyboard at the same time to enter the Service Menu (Figure 2 and 3).



Figure 2



Figure 3



### STEP 3

- Press the number '5' key (Figure 4) on the keyboard or touch "Calibration Setup".



Figure 4

### STEP 4

- Enter the password "2 1 8" and press "OK" (Figure 5 and 6).



Figure 5



Figure 6

### STEP 5

- Press the number "5" key on the keyboard or touch "Touchscreen Cal" (Figure 7 and 8).



Figure 7



Figure 8

### STEP 6

- Once in Touchscreen Calibration Mode, you will see a grey box with red notes on the left side (Figure 9).

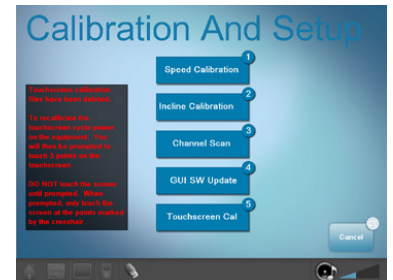


Figure 9

### STEP 7

- Turn the power off using the power switch.
  - Wait AT LEAST 30 seconds before turning back on. When prompted touch the screen on the crosshair (Figure 10).
- Note: The crosshair will appear on the screen three times in different positions each time.



Figure 10

### STEP 8

- Test unit for proper function.